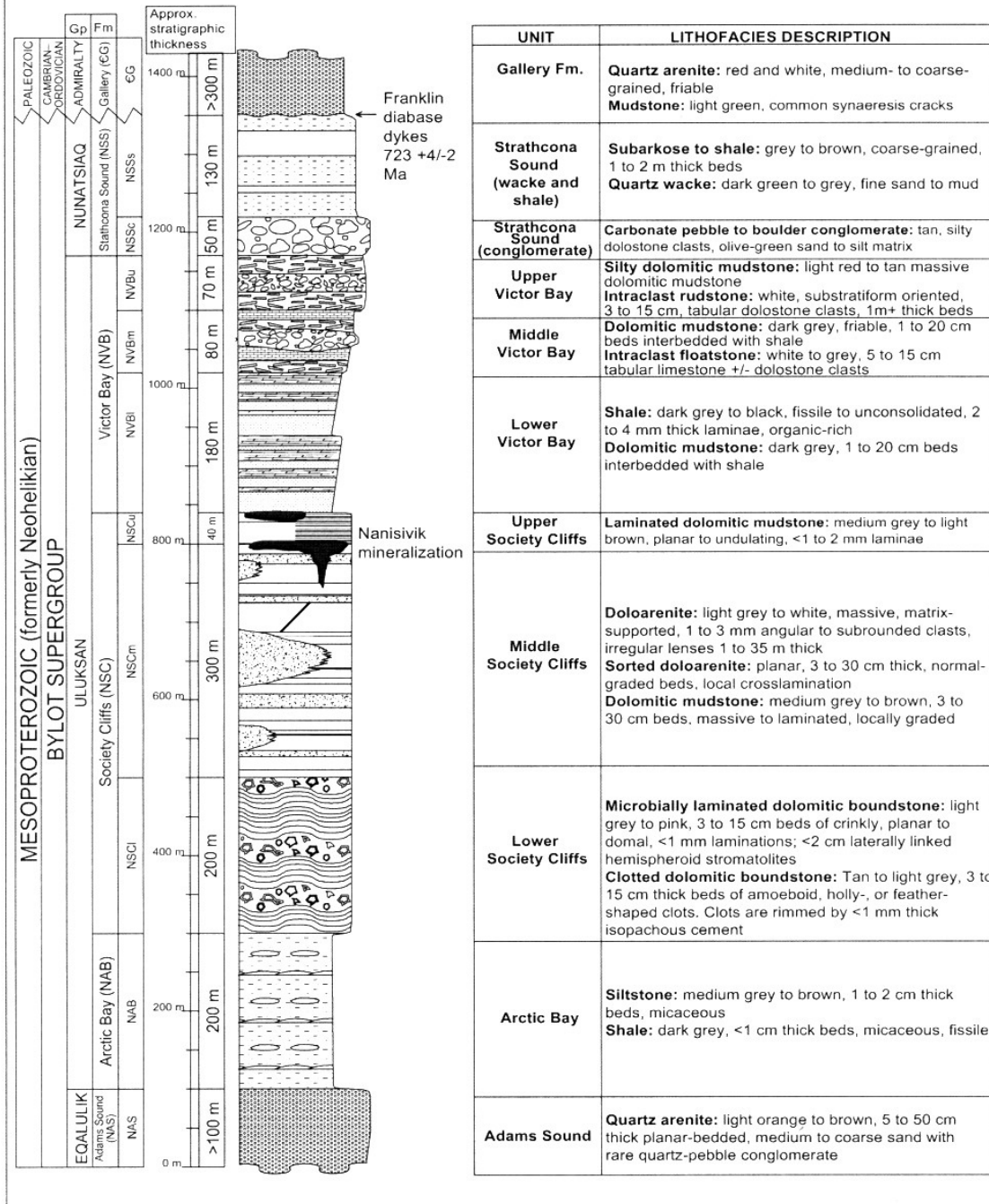


## GENERALIZED STRATIGRAPHIC SECTION – NANISIVIK AREA



From: Patterson and Powis (2002)

AS A MUTUAL PROTECTION TO OUR CLIENT, THE PUBLIC AND OURSELVES, ALL REPORTS AND DRAWINGS ARE SUBMITTED FOR THE CONFIDENTIAL INFORMATION OF OUR CLIENT FOR A SPECIFIC PROJECT AND AUTHORIZATION FOR USE AND/OR PUBLICATION OF DATA STATEMENTS CONCLUSIONS OR ABSTRACTS FROM OR REGARDING OUR REPORTS AND DRAWINGS IS RESERVED PENDING OUR WRITTEN APPROVAL.

SCALE:	As Shown	DESIGNED:	MJM
DATE:	JAN 2004	CHECKED:	MJM
DRAWN:	SLF	APPROVED:	JWC

CLIENT: NANISIVIK MINE, A DIVISION  
OF CANZINCO LTD.

PROJECT  
WEST TWIN DISPOSAL AREA CLOSURE PLAN

TITLE  
NANISIVIK GEOLOGY  
STRATIGRAPHIC COLUMN

PROJECT No.	DWG. No.	REV.
0255-008-09	2	0

**BGC**

**BGC Engineering Inc.**  
AN APPLIED EARTH SCIENCES COMPANY

Calgary, Alberta.

Phone: (403) 250-5185